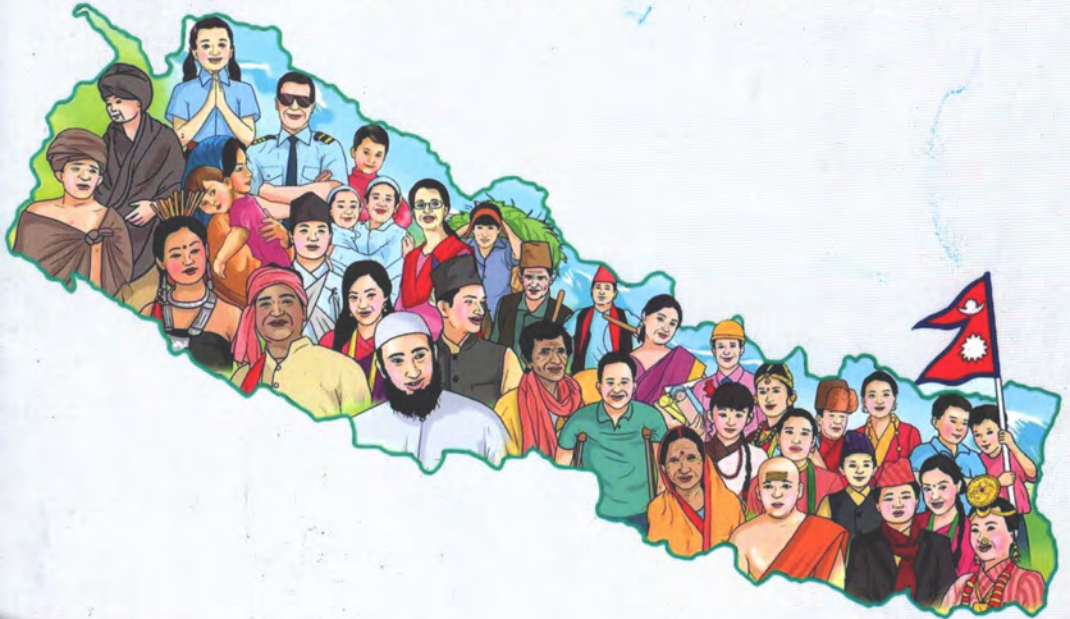


Demography of Nepal

Total population: 29,164,578

Total population of persons with disabilities: 654,782



All people, with or without disabilities have the same needs in terms of access to and information about "Sexual and Reproductive Health and Rights (SRHR)".

Persons with Disabilities: Sexuality and SRHR

Definition of Disability

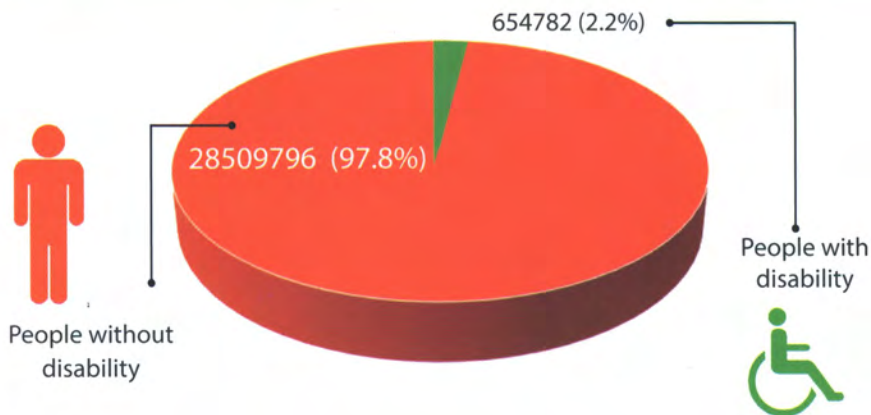
The United Nations Convention on the Rights of Persons with Disabilities (UNCRPD), defines Persons with Disabilities as, “those who have long-term physical, mental, intellectual or sensory impairments, which in interaction with various barriers, may hinder their full and effective participation in society on an equal basis with others”. The Act Relating to the Rights of Persons with Disabilities, 2017 has also defined persons with disabilities in similar lines to that of Convention on the Rights of Persons with Disabilities (CRPD).

Classification of Disability

Act on the rights of persons with disabilities - 2074 (2017)

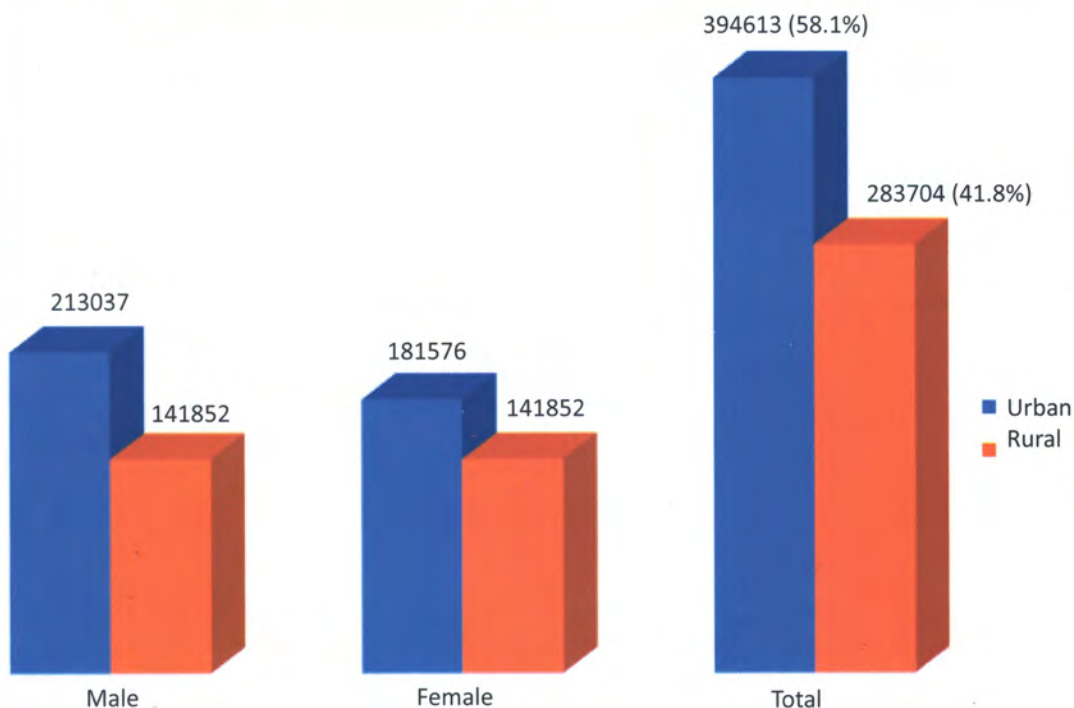
A.	Disability classification based on functional limitation and environmental barriers	B.	Disability classification based on severity	
1.	Physical disability	<ol style="list-style-type: none">1. Profound disability2. Severe disability3. Moderate disability4. Mild disability <p>Nepal's disability policies, acts and regulations indicates that there are nine main areas that the government has granted facilities and rights for the persons with disabilities</p> <ol style="list-style-type: none">1. Identity cards2. Free education3. Scholarships4. Medical care5. Workforce6. Transportation7. Accessibility8. Income tax and customs9. Social welfare and shelter		
2.	Visual disability			
	a. Blindness b. Low vision c. Total Blind			
3.	Disability related to hearing			
	a. Deaf b. Hard of hearing			
4.	Deaf & Blind disability			
5.	Speech disability			
6.	Mental or Psycho-social disability			
7.	Intellectual disability			
8.	Hemophilia			
9.	Autism Spectrum Disorder			
10.	Multiple disability			

Prevalence rate of persons with disabilities



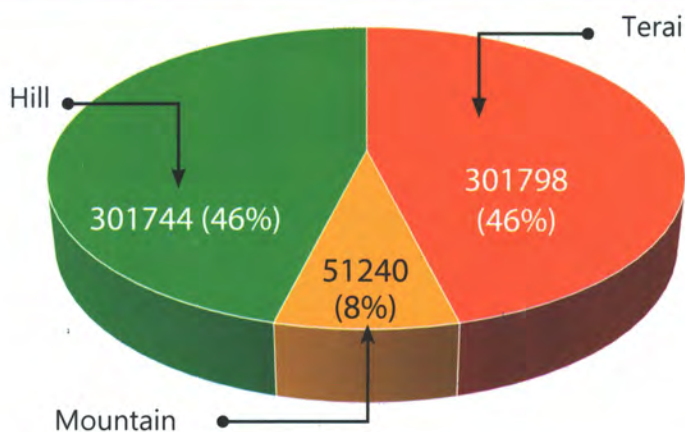
Source- National Census Report 2021, Published by CBS

Persons with disabilities by urban and rural area

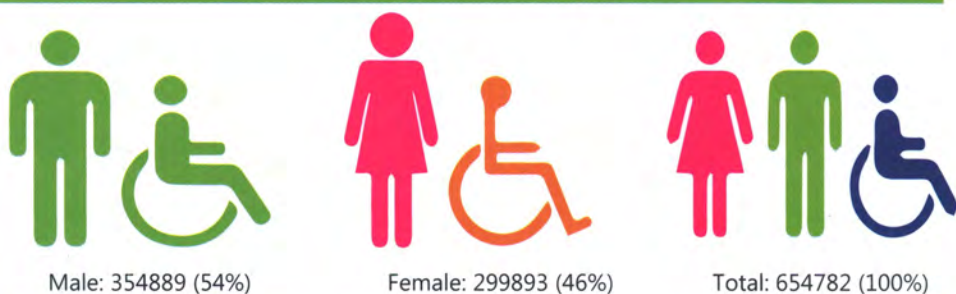


Source- National Census Report 2021, Published by CBS

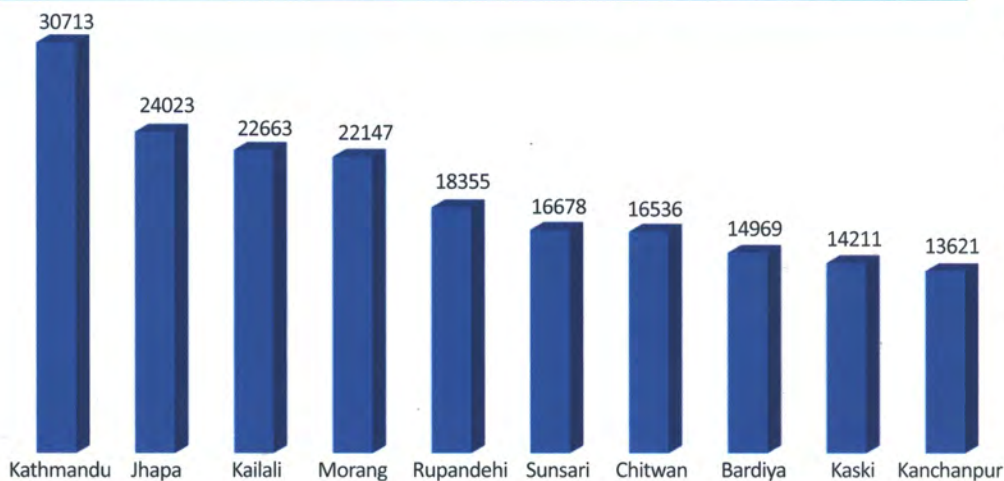
Number and percentage of persons with disabilities by ecological belt



Persons with disabilities by gender

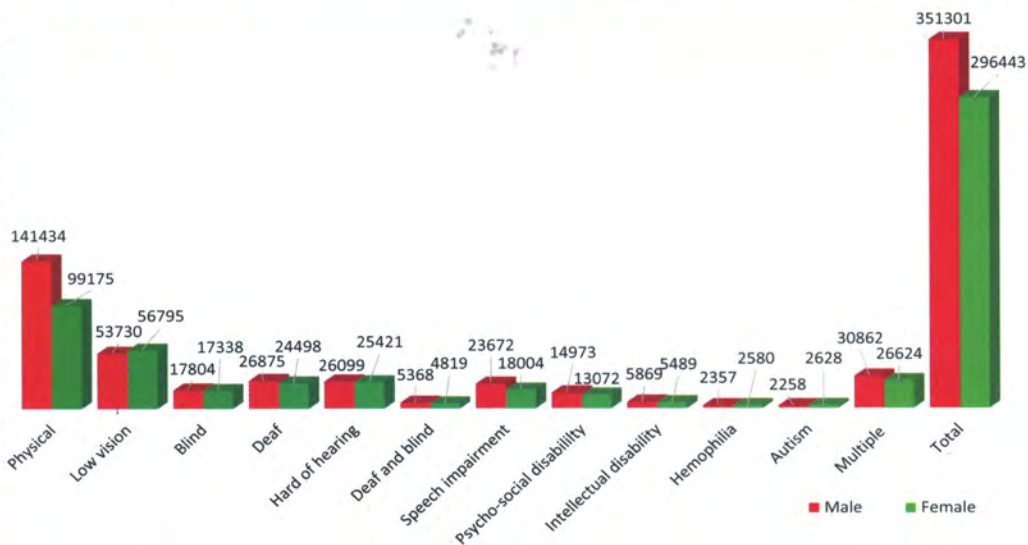


Top ten districts with highest number of persons with disabilities



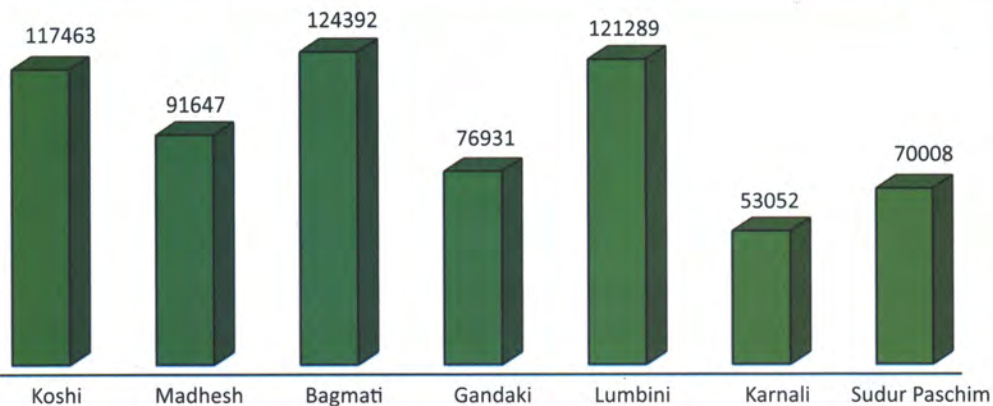
Persons with disabilities by gender and categories

Source - National Census Report 2021, Published by CBS



Province wise distribution of persons with disabilities

Source - National Census Report 2021, Published by CBS



Persons with disabilities in project operational areas

Districts	Total Population	Total Population with Disability	Physical	Blind	Low vision	Deaf	Hard of Hearing	Deaf and Blind	Speech	Autism	Intellectual	Multiple
Kathmandu	2,041,587	30,713	10,903	1,346	6,037	1,913	2,580	323	1,653	495	729	2,710
Lalitpur	551,667	8,005	2,868	630	1,228	646	555	94	404	83	150	748
Bhaktapur	432,132	6,002	2,271	428	739	371	544	51	297	78	129	625
Banke	603,194	13,522	5,216	2,356	746	930	943	185	635	576	331	72
Total	3,628,580	58,242	21,258	4,760	8,750	3,860	4,622	653	2,989	1,232	1,339	4,155

Source- National Census Report 2021, Published by CBS

Convention on the rights of persons with disabilities (CRPD)

1. The right of equality before law
2. The right of non-discrimination
3. The right to equal opportunity
4. The right to independent living
5. The right to full integration
6. The right to security

Advancing sexual and reproductive health and rights of persons with disabilities in Nepal

The project "Advancing sexual and reproductive health & rights of persons with disabilities in Nepal" is implemented since 2019 in support of Vaestoliitto (the Family Federation of Finland). In Nepal, there is a significant gap in sexual and reproductive health and rights program targeted for persons with disabilities. In this context, the Family Planning Association of Nepal (FPAN) partnered with eight pioneering disability organizations - Action on Disability Rights and Development-Nepal (ADRAD-Nepal), Nepal Disabled Women Association (NDWA), Blind Youth Association of Nepal (BYAN), Community Based Rehabilitation (CBR), Disable Empowerment and Communication Center (DEC) Nepal, Parent Association Person with Intellectual Disability (PAPID), National Disable Albino Nepal, & Banke Association of Blind (BAB) with technical support from Abilis Foundation for successful implementation of the project. Since 2019, more than 50,000 sexual and reproductive health services have been delivered to more than 20,000 persons with disabilities and thousands of demand generation and awareness raising activities were organized. In addition, 12 young persons with disabilities are working at the grass-root level in peer approach to aware the society and communities on disabilities issues and challenges. Similarly, advocacy work in coordination and partnership with like-minded organization is ongoing for inclusive, successive and friendly environment.

Major Partners



Family Planning Association of Nepal

Pulchowk, Lalitpur, P.O.Box 486, Kathmandu, Nepal
Phone: 977-1-5010240/5010270/5010275, Fax 977-1-524211
Hotline: 16600145000
Website: www.fpan.org